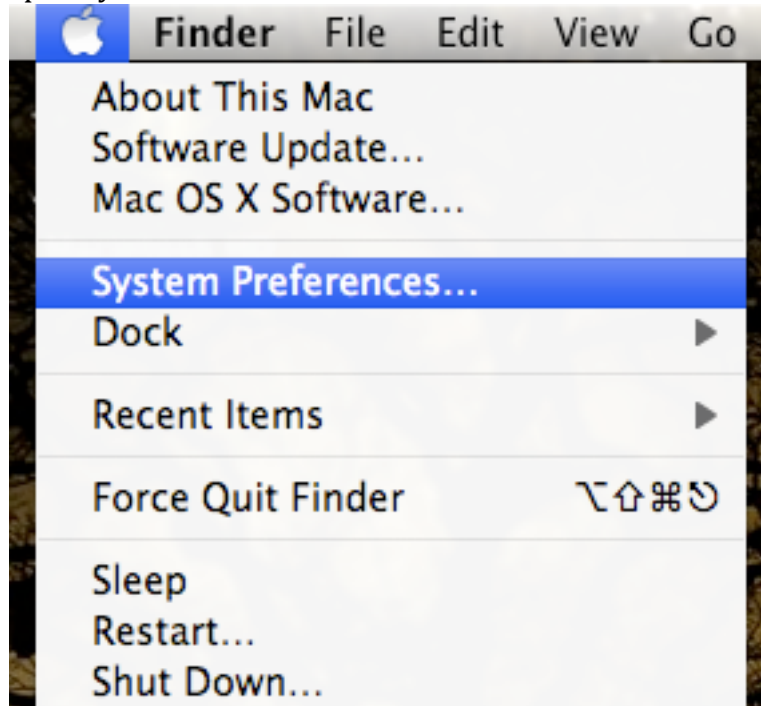
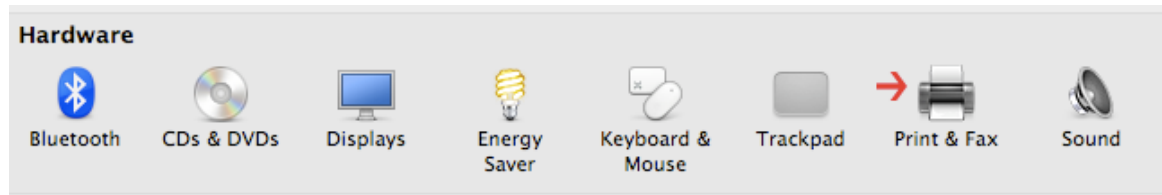


# Print to a UWSTUDENT Lab Printer from OS X Via the UW Wireless Network

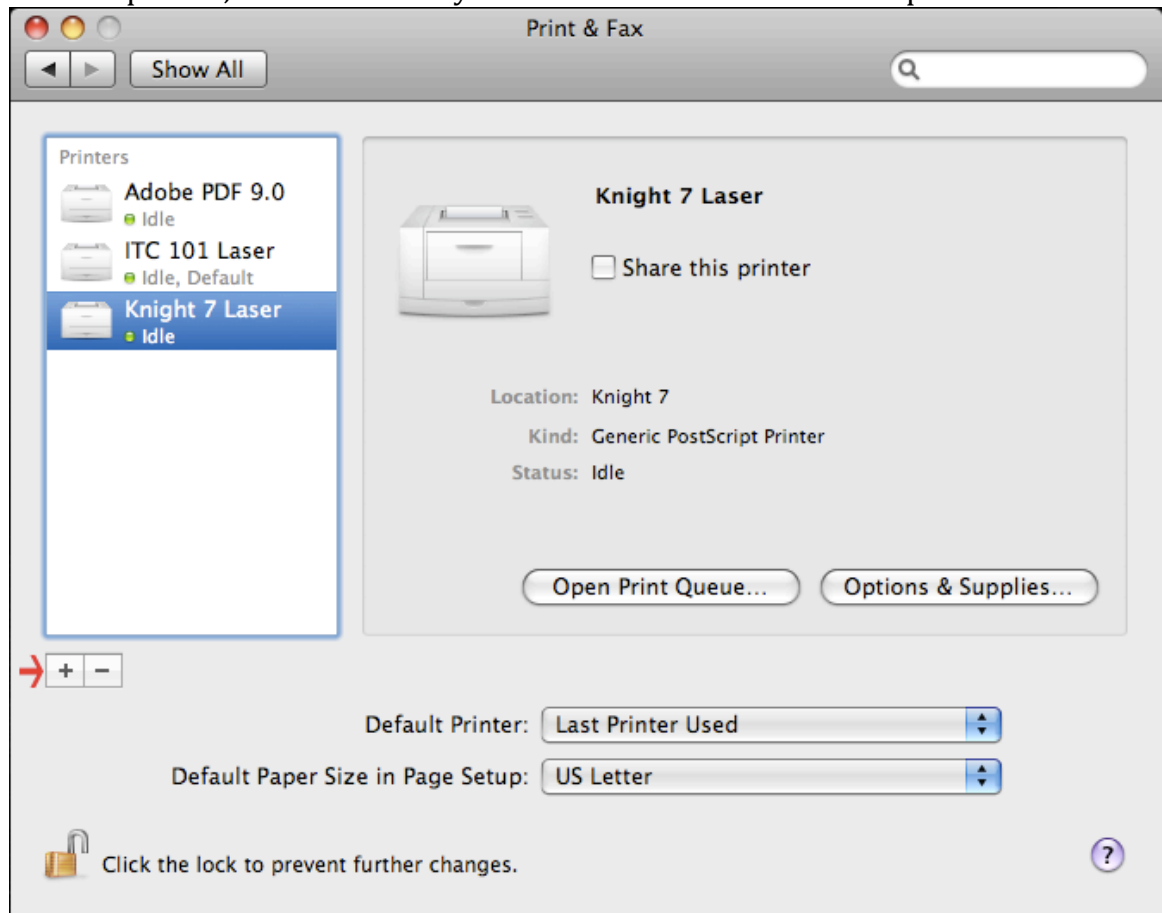
1. Open System Preferences



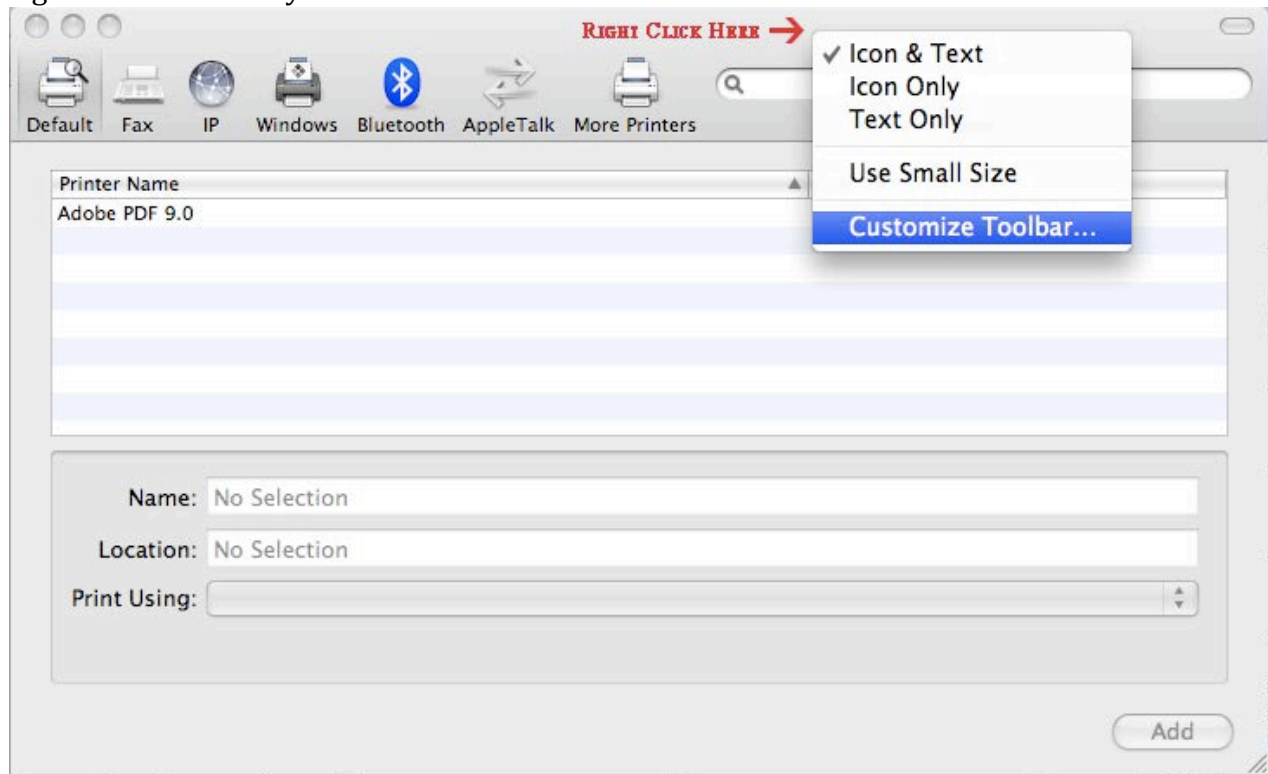
2. Select "Print & Fax"



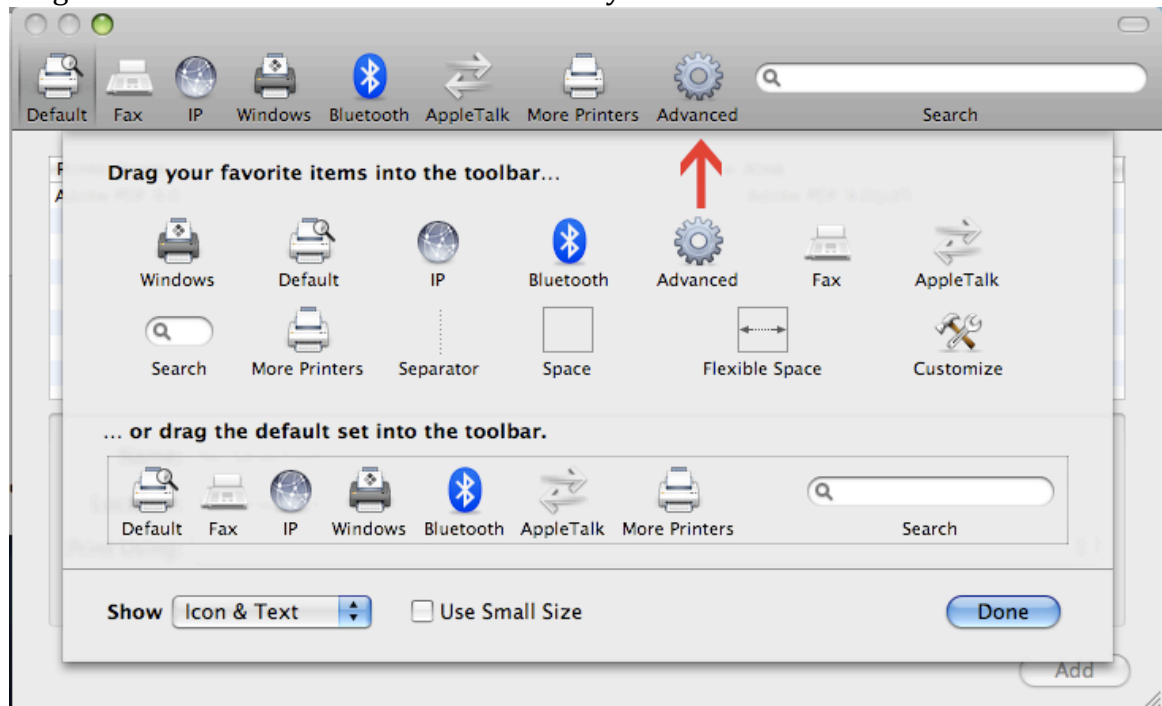
3. To add a printer, select the Plus symbol at the bottom of the list of printers.



4. Right click in the Grey Bar to select “Customize Toolbar”



5. Drag the advanced button onto the Dark Grey bar.



6. Fill out the information as shown below:

**Type:** Windows

**Device:** Another Device

**URL:** *The printer URL you want to print to. Go to <URL> to get a list of printer strings. Note that "%20" is used instead of a space.*

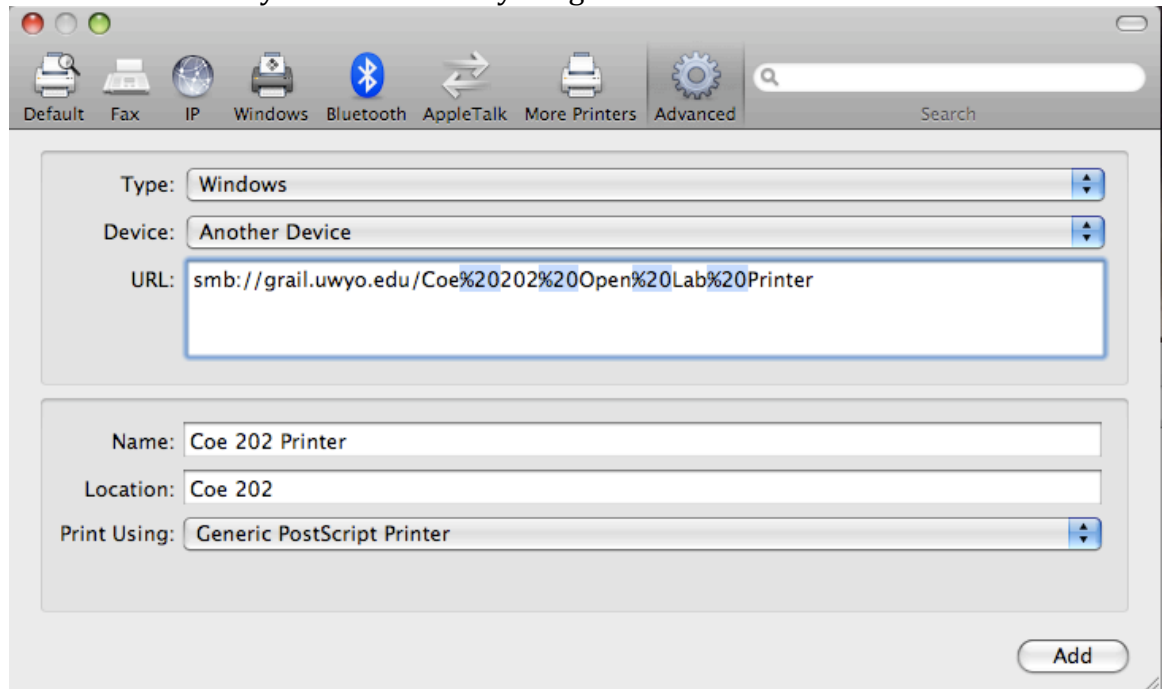
*Go to <http://microlab.uwyo.edu/labs/macprinters.asp> to get a list of printer strings.*

**Name:** *Your preferred name for the printer*

**Location:** *Your preferred location for the printer*

**Print Using:** Generic PostScript Printer

Select "Add" when you are sure everything is correct.

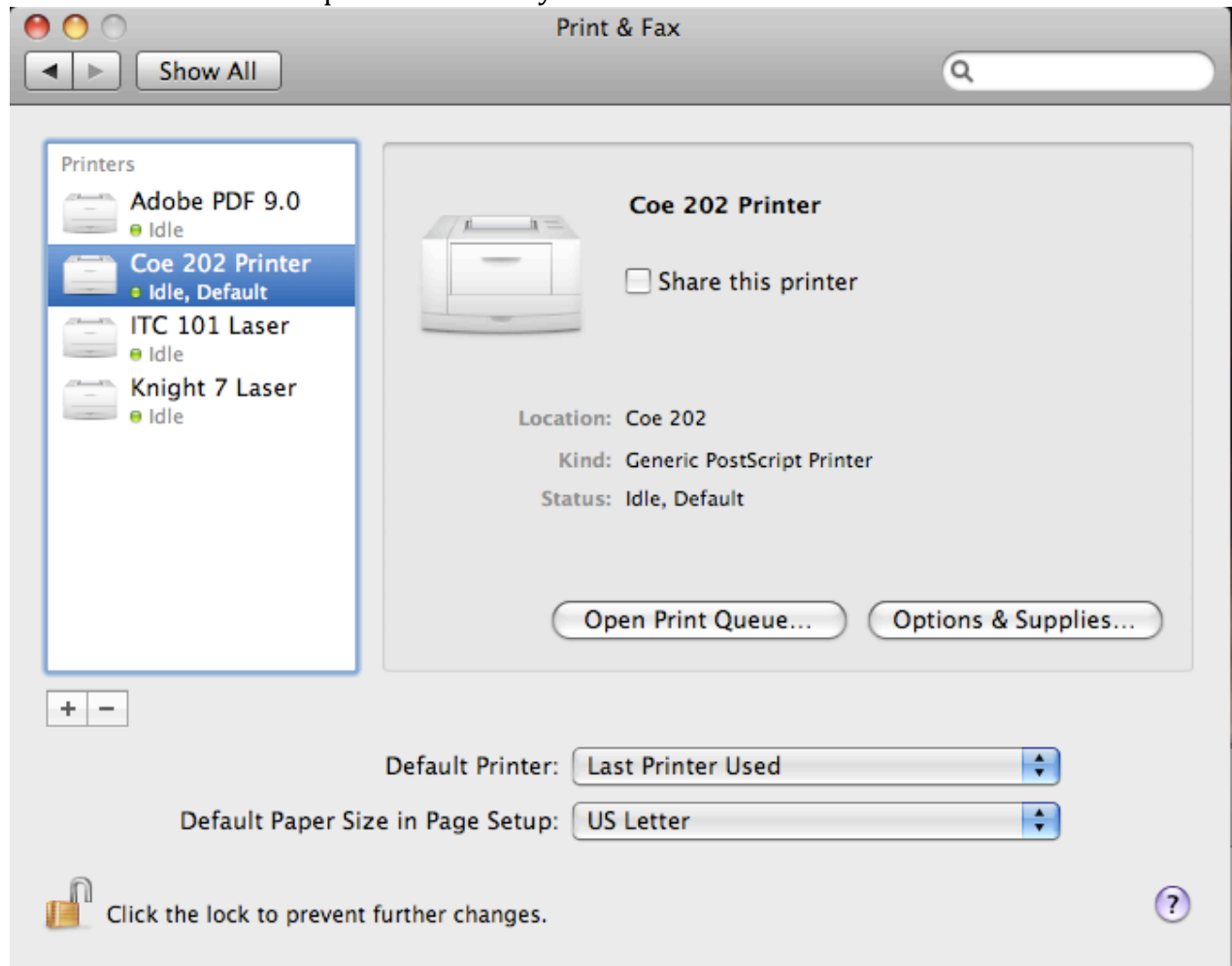


The image shows a screenshot of a Mac OS X printer configuration window. The window has a title bar with standard Mac OS X window controls (red, yellow, green buttons) and a search field. Below the title bar is a toolbar with icons for Default, Fax, IP, Windows, Bluetooth, AppleTalk, More Printers, and Advanced. The main content area contains several fields:

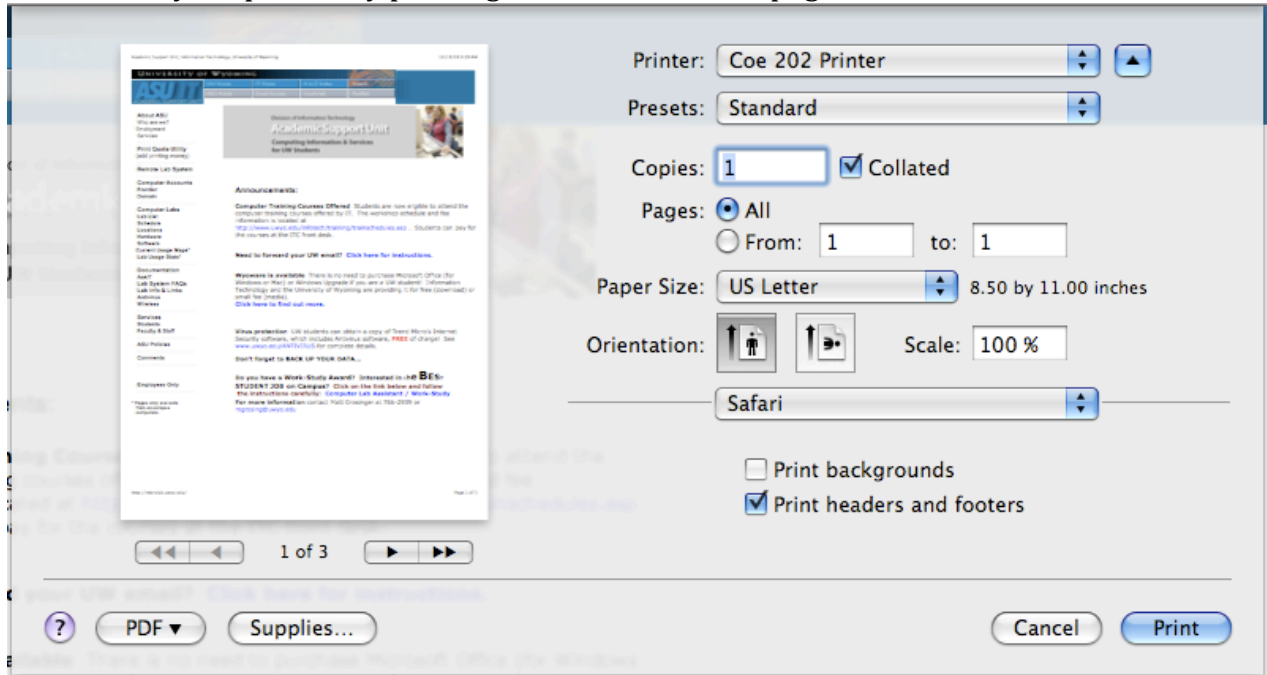
- Type:** A dropdown menu with "Windows" selected.
- Device:** A dropdown menu with "Another Device" selected.
- URL:** A text input field containing "smb://grail.uwyo.edu/Coe%20202%20Open%20Lab%20Printer".
- Name:** A text input field containing "Coe 202 Printer".
- Location:** A text input field containing "Coe 202".
- Print Using:** A dropdown menu with "Generic PostScript Printer" selected.

An "Add" button is located at the bottom right of the window.

7. You should now see the printer listed in your “Print & Fax” list.



8. You can test your printer by printing a document or webpage.



9. When you try to print, you will be asked to fill in your UWYO username and Password. Be sure to use **UWYO\<username>** in the Username box.



10. Please note, if you do not have enough print credit on your account, the document will not print. Please use <http://microlab.uwyo.edu/printquota.asp> to add to your print quota.